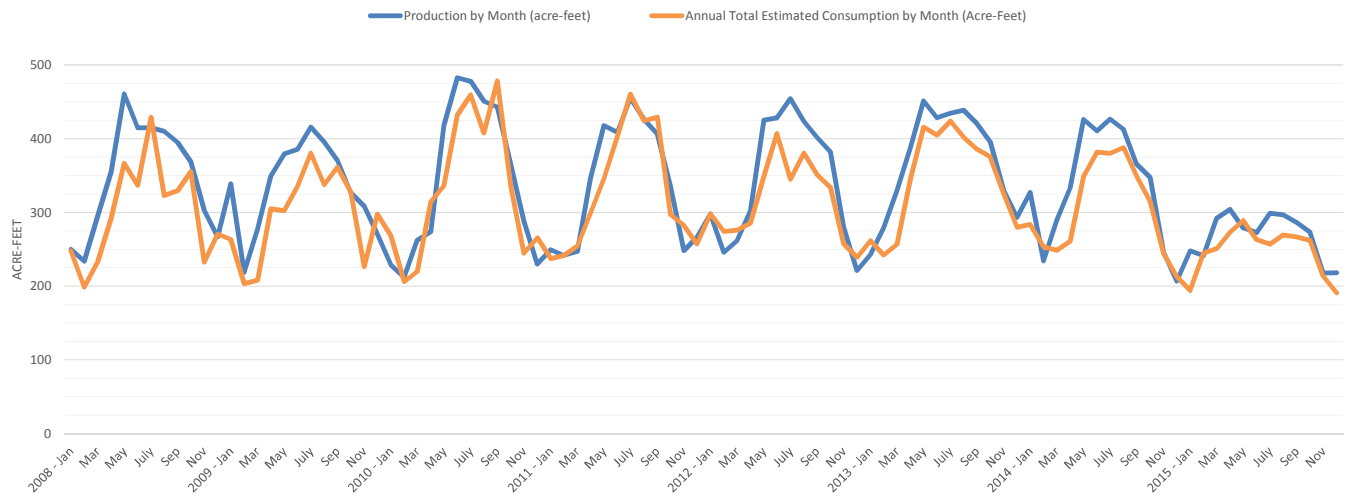


| Production by Month (acre-feet) |                |                |                |                |                |                |                |                |
|---------------------------------|----------------|----------------|----------------|----------------|----------------|----------------|----------------|----------------|
|                                 | 2008           | 2009           | 2010           | 2011           | 2012           | 2013           | 2014           | 2015           |
| January                         | 250.00         | 339.10         | 228.90         | 249.50         | 297.99         | 243.06         | 327.14         | 247.66         |
| February                        | 234.00         | 218.80         | 212.10         | 241.52         | 245.82         | 279.08         | 234.16         | 241.34         |
| March                           | 295.00         | 277.40         | 262.40         | 247.05         | 261.68         | 329.29         | 290.01         | 292.16         |
| April                           | 355.00         | 349.20         | 273.70         | 346.48         | 302.29         | 387.29         | 333.28         | 304.13         |
| May                             | 461.00         | 379.30         | 418.00         | 417.98         | 425.35         | 451.43         | 425.96         | 278.96         |
| June                            | 415.00         | 385.50         | 482.70         | 408.78         | 428.11         | 428.11         | 410.62         | 272.52         |
| July                            | 415.00         | 415.80         | 478.00         | 455.12         | 454.50         | 434.25         | 426.58         | 299.06         |
| August                          | 410.00         | 395.30         | 451.00         | 425.96         | 423.48         | 438.85         | 412.77         | 296.76         |
| September                       | 395.00         | 371.00         | 443.00         | 406.01         | 402.02         | 420.44         | 365.20         | 286.33         |
| October                         | 369.00         | 326.80         | 365.00         | 335.59         | 382.08         | 396.27         | 347.40         | 272.82         |
| November                        | 303.00         | 308.70         | 288.00         | 248.27         | 280.19         | 330.21         | 246.12         | 217.89         |
| December                        | 267.00         | 270.70         | 230.00         | 266.38         | 221.32         | 293.26         | 206.69         | 218.41         |
| <b>TOTAL</b>                    | <b>4169.00</b> | <b>4037.60</b> | <b>4132.80</b> | <b>4048.64</b> | <b>4124.83</b> | <b>4431.54</b> | <b>4025.93</b> | <b>3228.04</b> |

\* Production data taken from Marina Coast Water District Well Production Summaries

| Annual Total Estimated Consumption by Month (Acre-Feet) |        |        |        |        |        |        |        |        |
|---|--------|--------|--------|--------|--------|--------|--------|--------|
|   | 2008   | 2009   | 2010   | 2011   | 2012   | 2013   | 2014   | 2015   |
| January   | 247.67 | 263.53 | 268.67 | 237.52 | 297.91 | 261.57 | 283.58 | 193.94 |
| February  | 198.52 | 203.24 | 205.89 | 241.48 | 274.32 | 241.92 | 253.28 | 244.47 |
| March   | 232.79 | 208.08 | 220.13 | 254.20 | 275.92 | 256.96 | 248.67 | 250.91 |
| April   | 292.16 | 305.05 | 314.48 | 298.94 | 285.28 | 345.55 | 260.80 | 273.19 |
| May   | 366.50 | 302.44 | 336.18 | 346.00 | 349.02 | 415.61 | 348.87 | 288.98 |
| June  | 336.62 | 335.01 | 432.19 | 402.48 | 406.93 | 405.02 | 381.85 | 263.02 |
| July  | 429.20 | 380.63 | 459.50 | 460.59 | 345.06 | 424.05 | 380.15 | 256.84 |
| August  | 322.95 | 337.48 | 407.87 | 424.59 | 380.61 | 402.30 | 387.74 | 269.34 |
| September   | 329.35 | 361.62 | 478.48 | 429.27 | 351.55 | 385.60 | 348.87 | 266.76 |
| October   | 355.18 | 327.83 | 335.42 | 297.07 | 334.00 | 375.63 | 314.94 | 261.86 |
| November  | 232.73 | 226.62 | 244.55 | 282.55 | 257.89 | 326.16 | 244.46 | 213.44 |
| December  | 270.89 | 297.50 | 265.62 | 257.27 | 239.06 | 279.91 | 213.03 | 190.92 |

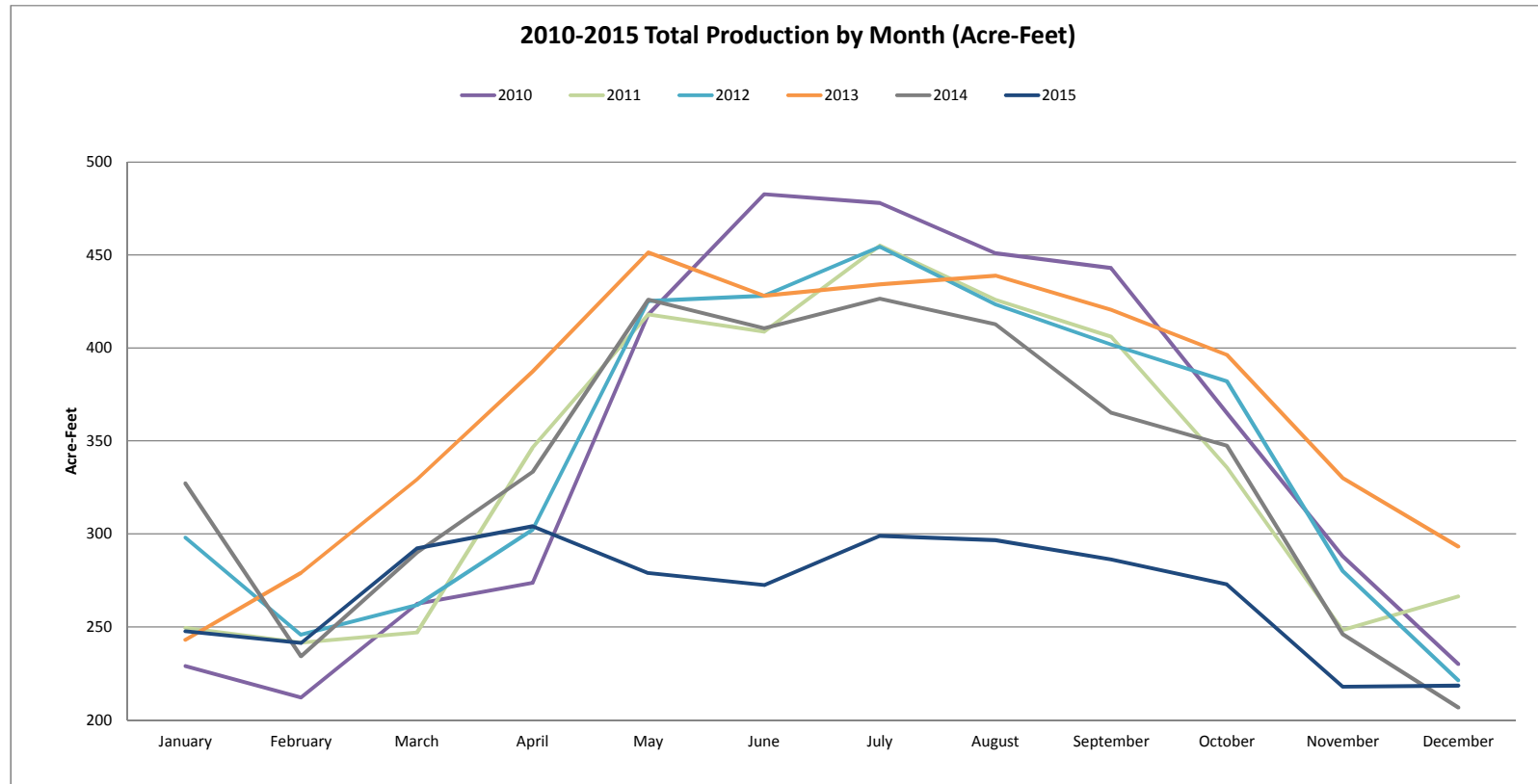
### 2008-2015 Total Production vs. Consumption by Year (Acre-Feet)



Production by Month (acre-feet)

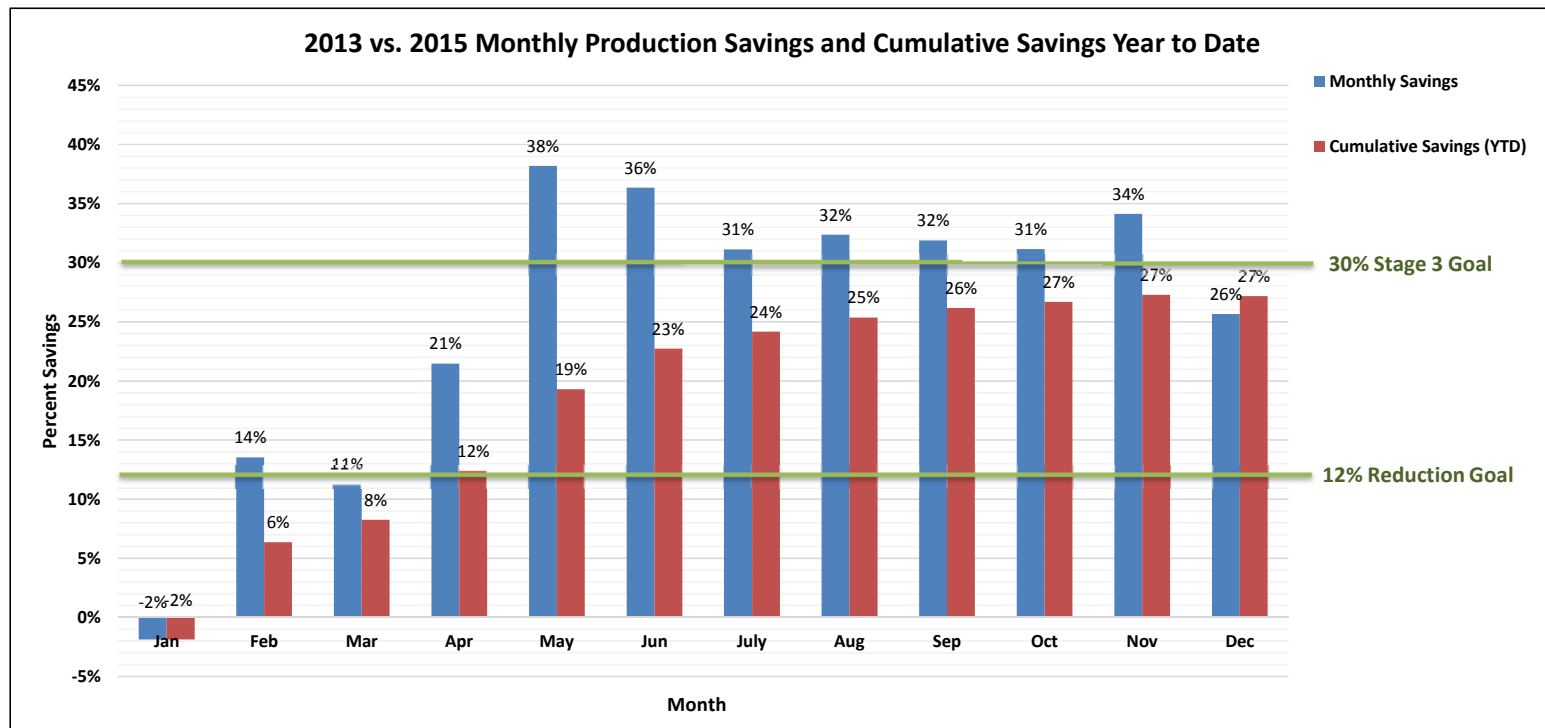
|              | 2008           | 2009           | 2010           | 2011           | 2012           | 2013           | 2014           | 2015           |
|--------------|----------------|----------------|----------------|----------------|----------------|----------------|----------------|----------------|
| January      | 250.00         | 339.10         | 228.90         | 249.50         | 297.99         | 243.06         | 327.14         | 247.66         |
| February     | 234.00         | 218.80         | 212.10         | 241.52         | 245.82         | 279.08         | 234.16         | 241.34         |
| March        | 295.00         | 277.40         | 262.40         | 247.05         | 261.68         | 329.29         | 290.01         | 292.16         |
| April        | 355.00         | 349.20         | 273.70         | 346.48         | 302.29         | 387.29         | 333.28         | 304.13         |
| May          | 461.00         | 379.30         | 418.00         | 417.98         | 425.35         | 451.43         | 425.96         | 278.96         |
| June         | 415.00         | 385.50         | 482.70         | 408.78         | 428.11         | 428.11         | 410.62         | 272.52         |
| July         | 415.00         | 415.80         | 478.00         | 455.12         | 454.50         | 434.25         | 426.58         | 299.06         |
| August       | 410.00         | 395.30         | 451.00         | 425.96         | 423.48         | 438.85         | 412.77         | 296.76         |
| September    | 395.00         | 371.00         | 443.00         | 406.01         | 402.02         | 420.44         | 365.20         | 286.33         |
| October      | 369.00         | 326.80         | 365.00         | 335.59         | 382.08         | 396.27         | 347.40         | 272.82         |
| November     | 303.00         | 308.70         | 288.00         | 248.27         | 280.19         | 330.21         | 246.12         | 217.89         |
| December     | 267.00         | 270.70         | 230.00         | 266.38         | 221.32         | 293.26         | 206.69         | 218.41         |
| <b>TOTAL</b> | <b>4169.00</b> | <b>4037.60</b> | <b>4132.80</b> | <b>4048.64</b> | <b>4124.83</b> | <b>4431.54</b> | <b>4025.93</b> | <b>3228.04</b> |

\* Production data taken from Marina Coast Water District Well Production Summaries



**Monthly Production Savings and Cumulative Savings Year to Date,  
2013 VS. 2015**

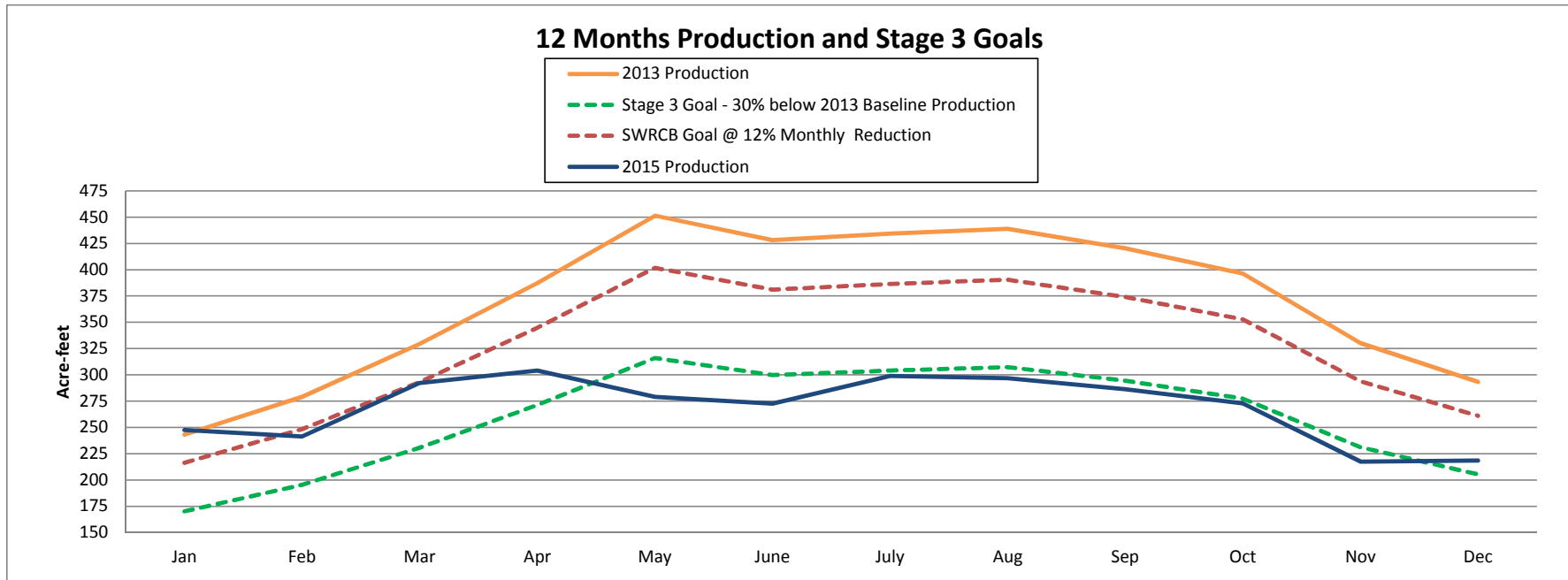
|              | 2013 Water Prod (AF) | 2015 Water Prod (AF) | Monthly Savings (AF) | Monthly Savings | Cumulative Savings (YTD) |
|--------------|----------------------|----------------------|----------------------|-----------------|--------------------------|
| <b>Jan</b>   | 243                  | 248                  | -5                   | -2%             | -2%                      |
| <b>Feb</b>   | 279                  | 241                  | 38                   | 14%             | 6%                       |
| <b>Mar</b>   | 329                  | 292                  | 37                   | 11%             | 8%                       |
| <b>Apr</b>   | 387                  | 304                  | 83                   | 21%             | 12%                      |
| <b>May</b>   | 451                  | 279                  | 172                  | 38%             | 19%                      |
| <b>Jun</b>   | 428                  | 273                  | 156                  | 36%             | 23%                      |
| <b>July</b>  | 434                  | 299                  | 135                  | 31%             | 24%                      |
| <b>Aug</b>   | 439                  | 297                  | 142                  | 32%             | 25%                      |
| <b>Sep</b>   | 420                  | 286                  | 134                  | 32%             | 26%                      |
| <b>Oct</b>   | 396                  | 273                  | 123                  | 31%             | 27%                      |
| <b>Nov</b>   | 330                  | 218                  | 113                  | 34%             | 27%                      |
| <b>Dec</b>   | 293                  | 218                  | 75                   | 26%             | 27%                      |
| <b>Total</b> | <b>6122</b>          | <b>4592</b>          | <b>1204</b>          | <b>-</b>        | <b>25%</b>               |



### Monthly Production Reduction Performance

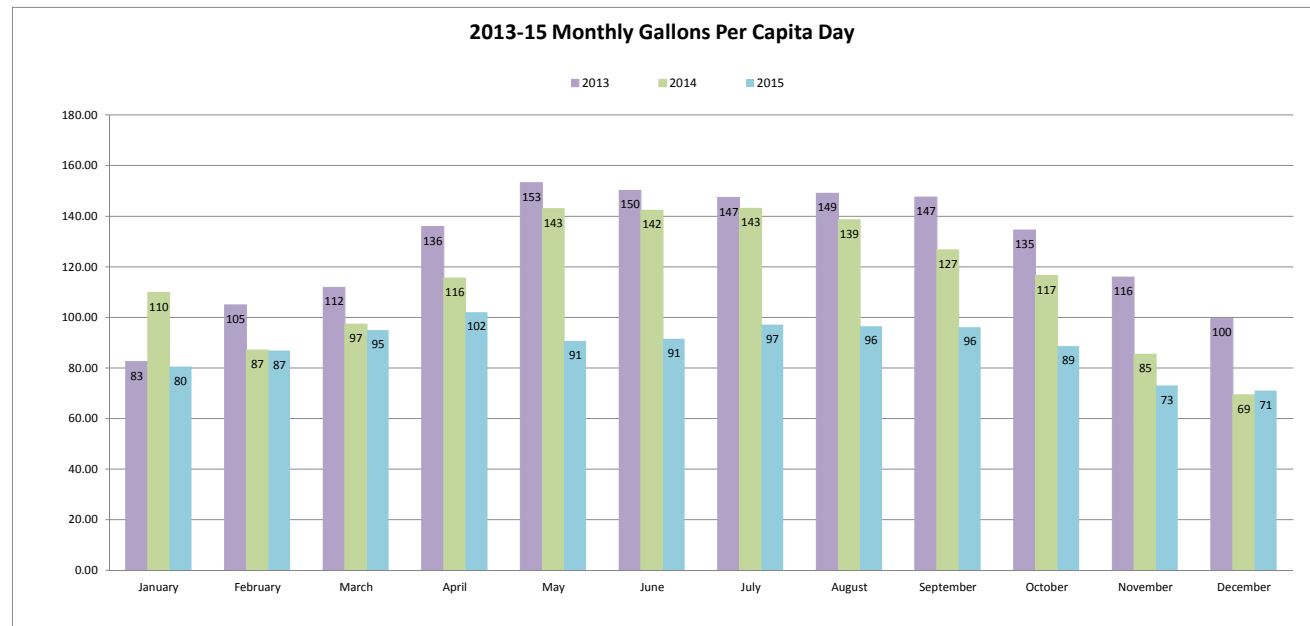
|             | Acre-Feet        |                                   |                                    |                  |  |                  |  |
|-------------|------------------|-----------------------------------|------------------------------------|------------------|--|------------------|--|
|             | *2013 Production | Stage 3 Goals - @ a 30% Reduction | SWRCB Goal @ 12% Monthly Reduction | *2014 Production | 2014 Performance Beyond 30% Goal<br>Below 30% Goal | *2015 Production | 2015 Performance Beyond 30% Goal<br>Below 30% Goal |
| <b>Jan</b>  | 243.06           | 170.14                            | 216.32                             | 327.14           | 157.00   | 247.66           | 77.52  |
| <b>Feb</b>  | 279.08           | 195.36                            | 248.38                             | 234.16           | 38.80  | 241.34           | 45.98  |
| <b>Mar</b>  | 329.29           | 230.50                            | 293.07                             | 290.01           | 59.51  | 292.16           | 61.66  |
| <b>Apr</b>  | 387.29           | 271.10                            | 344.69                             | 333.28           | 62.18  | 304.13           | 33.03  |
| <b>May</b>  | 451.43           | 316.00                            | 401.77                             | 425.96           | 109.96   | 278.96           | -37.04   |
| <b>June</b> | 428.11           | 299.68                            | 381.02                             | 410.62           | 110.94   | 272.52           | -27.16   |
| <b>July</b> | 434.25           | 303.98                            | 386.48                             | 426.58           | 122.61   | 299.06           | -4.91  |
| <b>Aug</b>  | 438.85           | 307.20                            | 390.58                             | 412.77           | 105.58   | 296.76           | -10.44   |
| <b>Sep</b>  | 420.44           | 294.31                            | 374.19                             | 365.2            | 70.89  | 286.33           | -7.98  |
| <b>Oct</b>  | 396.27           | 277.39                            | 352.68                             | 347.4            | 70.01  | 272.82           | -4.57  |
| <b>Nov</b>  | 330.21           | 231.15                            | 293.89                             | 246.12           | 14.97  | 217.52           | -13.63   |
| <b>Dec</b>  | 293.26           | 205.28                            | 261.00                             | 206.69           | 1.41   | 218.41           | 13.13  |

\* Production data taken from Marina Coast Water District Well Production Summaries



| 2015      |           |                 |                      |            |        |
|-----------|-----------|-----------------|----------------------|------------|--------|
| # of days |           | Production (AF) | Production (Gallons) | Population | GPCD   |
| 31        | January   | 247.66          | 80,700,258.66        | 32,375     | 80.41  |
| 28        | February  | 241.34          | 78,640,880.34        | 32,375     | 86.75  |
| 31        | March     | 292.16          | 95,200,628.16        | 32,375     | 94.86  |
| 30        | April     | 304.13          | 99,101,064.63        | 32,375     | 102.03 |
| 31        | May       | 278.96          | 90,899,394.96        | 32,375     | 90.57  |
| 30        | June      | 272.52          | 88,800,914.52        | 32,375     | 91.43  |
| 31        | July      | 299.06          | 97,449,000.06        | 32,375     | 97.10  |
| 31        | August    | 296.76          | 96,699,542.76        | 32,375     | 96.35  |
| 30        | September | 286.33          | 93,300,916.83        | 32,375     | 96.06  |
| 31        | October   | 272.82          | 88,898,669.82        | 32,375     | 88.58  |
| 30        | November  | 217.52          | 70,879,109.52        | 32,375     | 72.98  |
| 31        | December  | 218.41          | 71,169,116.91        | 32,375     | 70.91  |
| 365       | 2015 Year | 3227.67         | 1,051,739,497.17     | 32,375     | 89.00  |

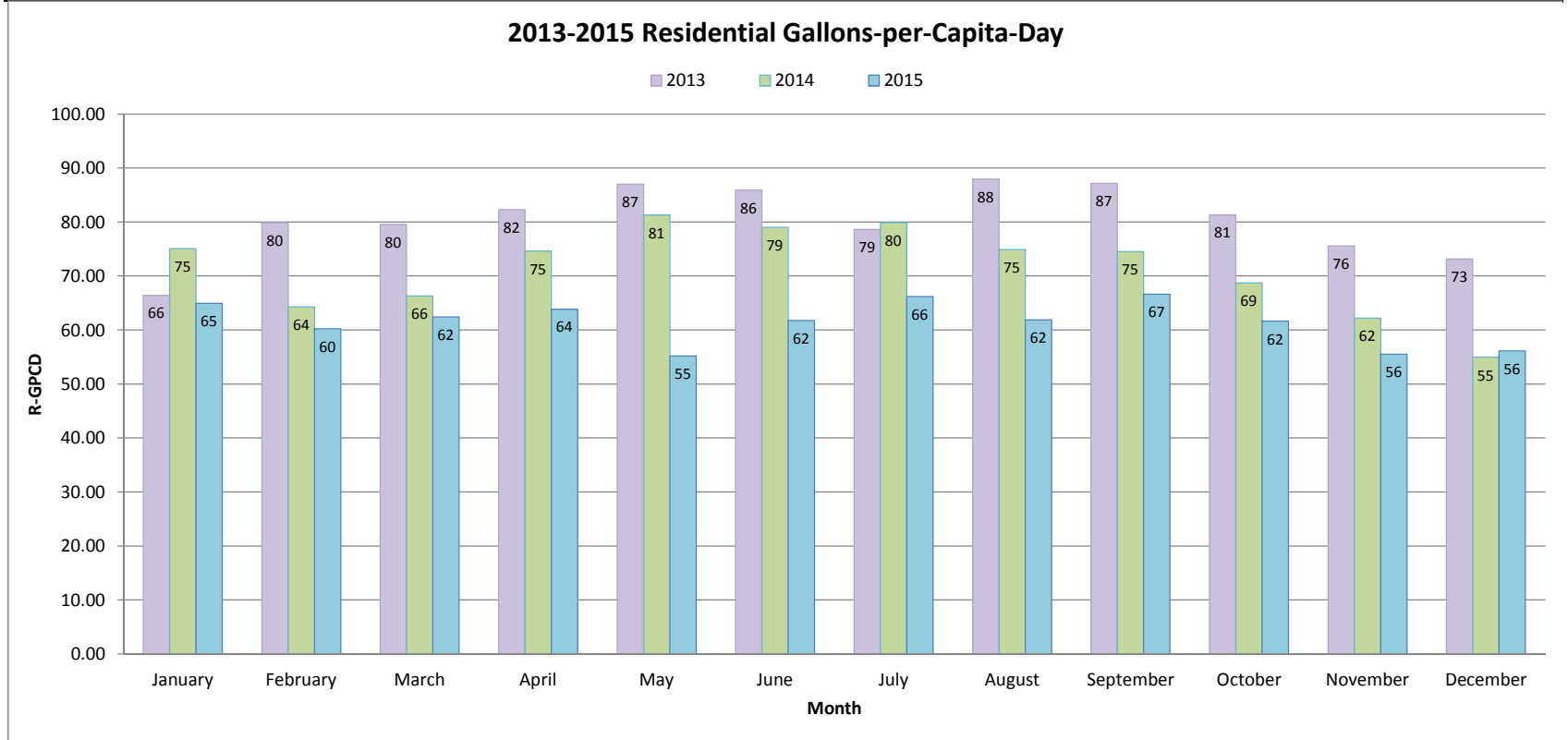
| District Baseline and GPCD Targets (Gross Production) |      |               |
|---|------|---------------|
| Description   | Year | Amount (gpcd) |
| Baseline GPCD   | 2008 | 133           |
| Maximum Allowable Target                              | 2020 | 126           |
| Interim GPCD Target                                   | 2015 | 125           |
| 2020 GPCD Target                                      | 2020 | 117           |
| 2014 GPCD   | 2014 | 115           |
| 2015 GPCD Year  |      | 89.00         |



### 2013-2015 Residential Gallons-per-Capita-Day

$$\text{R-GPCD} = (\text{monthly production} \times \text{percentage residential use}) / (\text{population} \times \text{days in month})$$

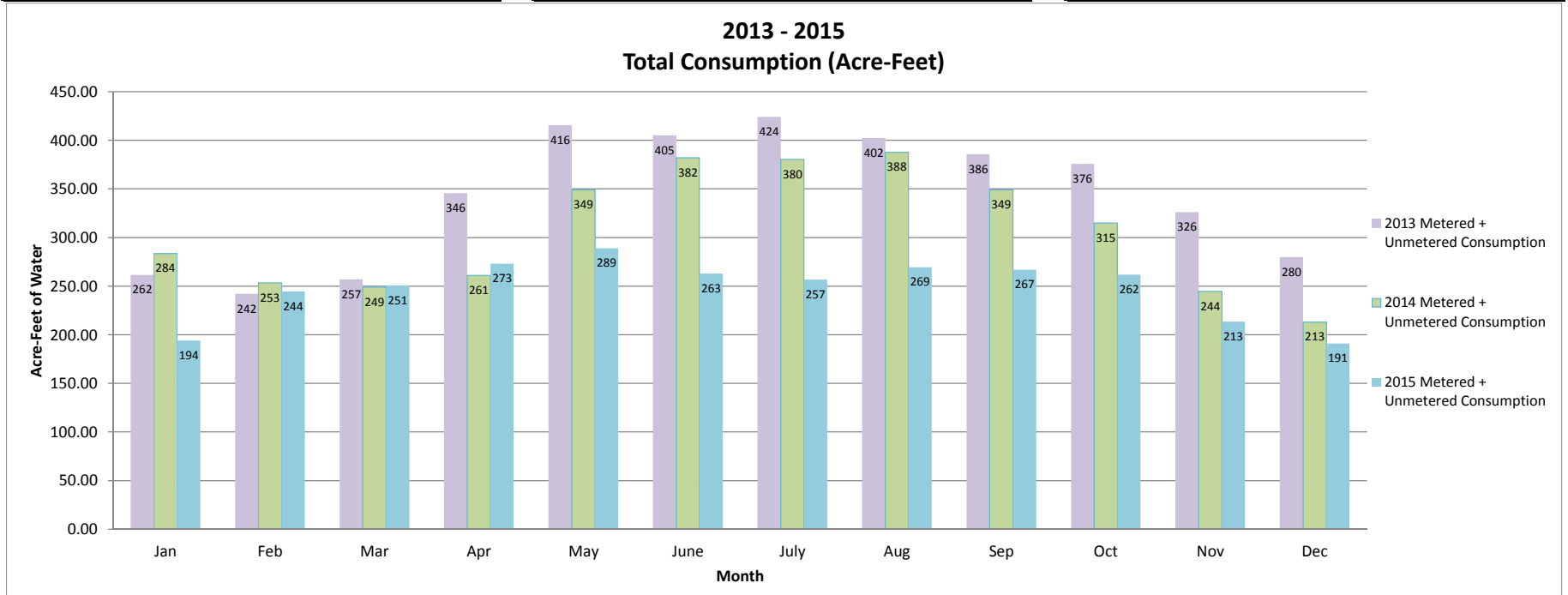
| # of days | 2013                 |                   |            |        | 2014                 |                   |            |        | 2015                 |                   |            |        |       |
|-----------|----------------------|-------------------|------------|--------|----------------------|-------------------|------------|--------|----------------------|-------------------|------------|--------|-------|
|           | Production (Gallons) | % Residential Use | Population | R-GPCD | Production (Gallons) | % Residential Use | Population | R-GPCD | Production (Gallons) | % Residential Use | Population | R-GPCD |       |
| 31        | January              | 79,201,344.06     | 80.49%     | 30,961 | 66.42                | 106,598,896.14    | 68.37%     | 31,325 | 75.05                | 80,700,258.66     | 80.76%     | 32,375 | 64.94 |
| 28        | February             | 90,938,497.08     | 76.16%     | 30,961 | 79.89                | 76,301,270.16     | 73.90%     | 31,325 | 64.29                | 78,640,880.34     | 69.40%     | 32,375 | 60.21 |
| 31        | March                | 107,299,475.79    | 71.17%     | 30,961 | 79.57                | 94,500,048.51     | 68.11%     | 31,325 | 66.28                | 95,200,628.16     | 65.81%     | 32,375 | 62.42 |
| 30        | April                | 126,198,833.79    | 60.57%     | 30,961 | 82.30                | 108,599,621.28    | 64.56%     | 31,325 | 74.61                | 99,101,064.63     | 62.57%     | 32,375 | 63.84 |
| 31        | May                  | 147,098,916.93    | 56.76%     | 30,961 | 86.99                | 138,799,491.96    | 56.86%     | 31,325 | 81.27                | 90,899,394.96     | 60.93%     | 32,375 | 55.18 |
| 30        | June                 | 139,500,071.61    | 57.18%     | 30,961 | 85.87                | 133,800,937.62    | 55.50%     | 31,325 | 79.02                | 88,800,914.52     | 67.54%     | 32,375 | 61.75 |
| 31        | July                 | 141,500,796.75    | 53.32%     | 30,961 | 78.61                | 139,001,519.58    | 55.82%     | 31,325 | 79.90                | 97,449,000.06     | 68.15%     | 32,375 | 66.17 |
| 31        | August               | 142,999,711.35    | 59.01%     | 30,961 | 87.92                | 134,501,517.27    | 54.06%     | 31,325 | 74.87                | 96,699,542.76     | 64.22%     | 32,375 | 61.87 |
| 30        | September            | 137,000,794.44    | 59.09%     | 30,961 | 87.16                | 119,000,785.20    | 58.85%     | 31,325 | 74.52                | 93,300,916.83     | 69.37%     | 32,375 | 66.64 |
| 31        | October              | 129,124,975.77    | 60.44%     | 30,961 | 81.32                | 113,200,637.40    | 58.92%     | 31,325 | 68.69                | 88,898,669.82     | 69.57%     | 32,375 | 61.62 |
| 30        | November             | 107,599,258.71    | 65.20%     | 30,961 | 75.54                | 80,198,448.12     | 72.89%     | 31,325 | 62.20                | 70,999,674.39     | 75.97%     | 32,375 | 55.53 |
| 31        | December             | 95,559,064.26     | 73.47%     | 30,961 | 73.15                | 67,350,143.19     | 79.24%     | 31,325 | 54.96                | 71,169,116.91     | 79.15%     | 32,375 | 56.13 |



| Metered Consumption |                |                |                |
|---------------------|----------------|----------------|----------------|
|                     | 2013           | 2014           | 2015           |
| Jan                 | 230.15         | 260.74         | 172.66         |
| Feb                 | 210.50         | 230.44         | 223.34         |
| Mar                 | 225.54         | 225.83         | 229.77         |
| Apr                 | 314.13         | 237.96         | 252.06         |
| May                 | 384.19         | 326.03         | 267.95         |
| June                | 373.60         | 359.01         | 242.02         |
| July                | 392.63         | 357.31         | 235.70         |
| Aug                 | 370.88         | 364.90         | 248.20         |
| Sep                 | 354.18         | 326.03         | 245.63         |
| Oct                 | 344.21         | 292.10         | 240.72         |
| Nov                 | 294.74         | 221.62         | 192.62         |
| Dec                 | 248.49         | 190.19         | 170.09         |
| <b>TOTAL</b>        | <b>3743.24</b> | <b>3392.15</b> | <b>2720.77</b> |

| Estimated Unmetered Consumption |               |               |               |
|---------------------------------|---------------|---------------|---------------|
|                                 | 2013          | 2014          | 2015          |
| Jan                             | 31.42         | 22.84         | 21.28         |
| Feb                             | 31.42         | 22.84         | 21.14         |
| Mar                             | 31.42         | 22.84         | 21.14         |
| Apr                             | 31.42         | 22.84         | 21.14         |
| May                             | 31.42         | 22.84         | 21.02         |
| June                            | 31.42         | 22.84         | 21.00         |
| July                            | 31.42         | 22.84         | 21.14         |
| Aug                             | 31.42         | 22.84         | 21.14         |
| Sep                             | 31.42         | 22.84         | 21.14         |
| Oct                             | 31.42         | 22.84         | 21.14         |
| Nov                             | 31.42         | 22.84         | 20.83         |
| Dec                             | 31.42         | 22.84         | 20.83         |
| <b>TOTAL</b>                    | <b>377.00</b> | <b>274.12</b> | <b>252.91</b> |

| Total Consumption |                |                |                |
|-------------------|----------------|----------------|----------------|
|                   | 2013           | 2014           | 2015           |
| Jan               | 261.57         | 283.58         | 193.94         |
| Feb               | 241.92         | 253.28         | 244.47         |
| Mar               | 256.96         | 248.67         | 250.91         |
| Apr               | 345.55         | 260.80         | 273.19         |
| May               | 415.61         | 348.87         | 288.98         |
| June              | 405.02         | 381.85         | 263.02         |
| July              | 424.04         | 380.15         | 256.84         |
| Aug               | 402.29         | 387.74         | 269.34         |
| Sep               | 385.60         | 348.87         | 266.76         |
| Oct               | 375.62         | 314.94         | 261.86         |
| Nov               | 326.15         | 244.46         | 213.44         |
| Dec               | 279.90         | 213.03         | 190.92         |
| <b>TOTAL</b>      | <b>4120.24</b> | <b>3666.27</b> | <b>2973.68</b> |



2013-2015 Single Family Consumption by Month (Acre-Feet)





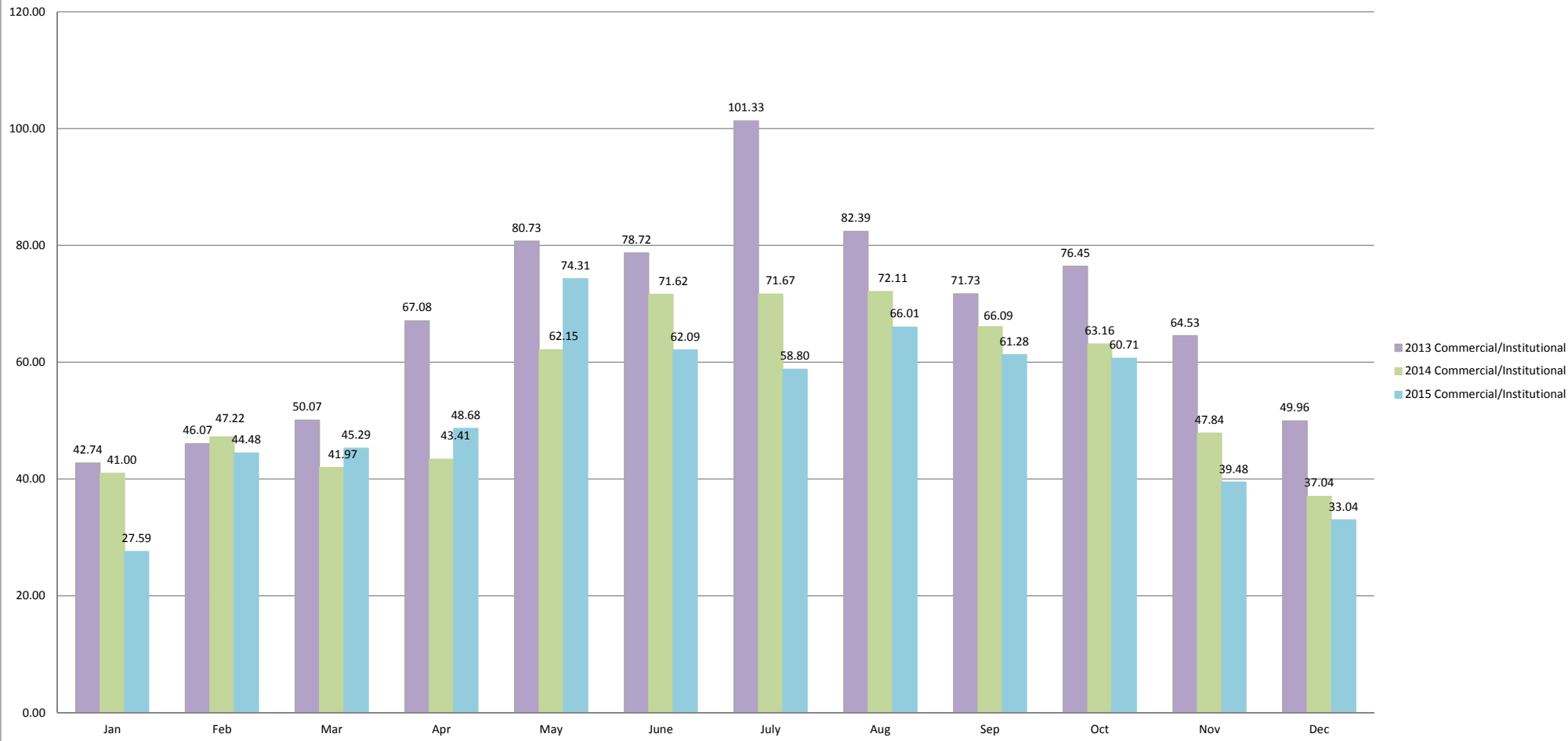
2013-2015 Multi-Family Total Consumption by Month (Acre-Feet)



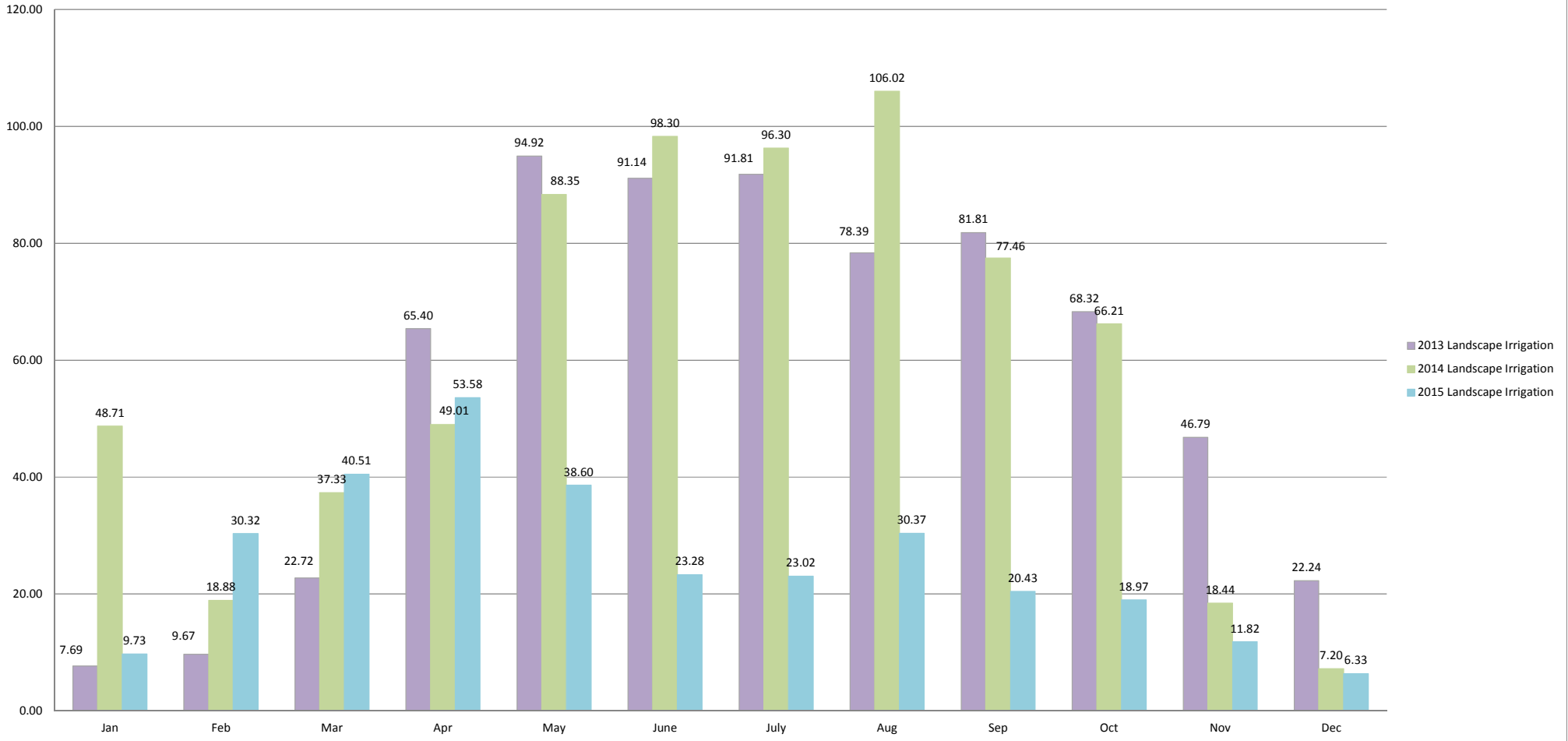
### 2013-2015 Residential Total Consumption by Month (Acre-Feet) (Single-Family and Multi-family Combined)



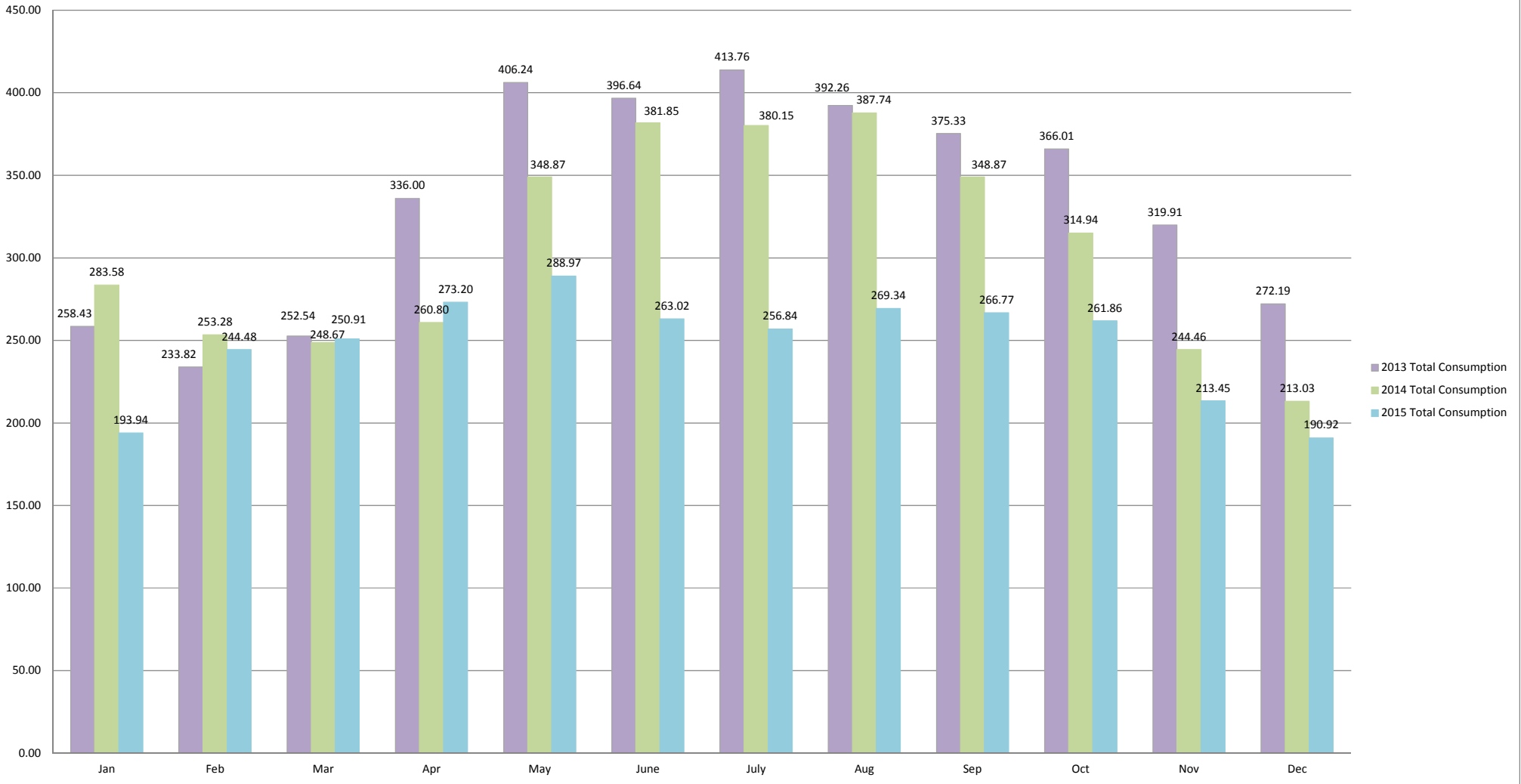
2013-2015 Commercial/Institutional Consumption by Month (Acre-Feet)



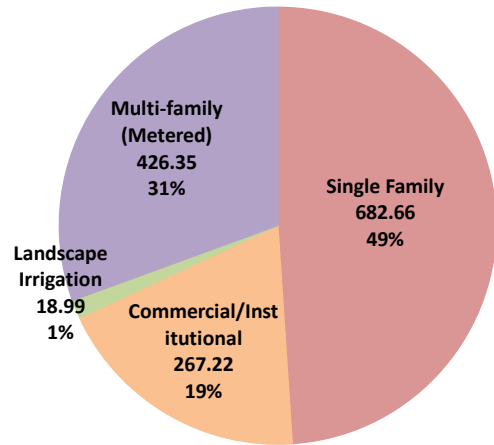
2013-2015 Landscape Irrigation Consumption by Month (Acre-Feet)



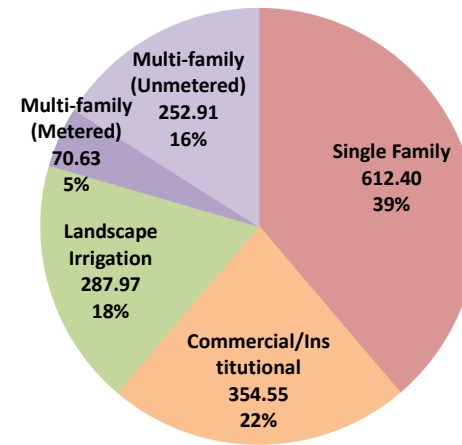
**2013-2015 Total Consumption by Month (Acre-Feet)**



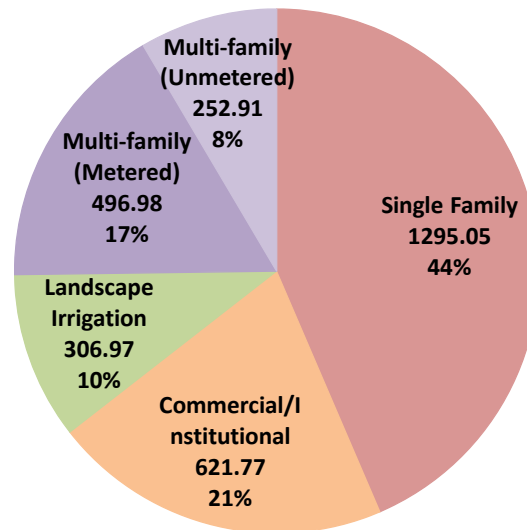
**2015 Consumption by Category (Acre-Feet)  
Marina Service Area**



**2015 Consumption by Category (Acre-Feet)  
Ord Service Area**



**2015 Consumption by Category (Acre-Feet)  
Marina & Ord Combined**



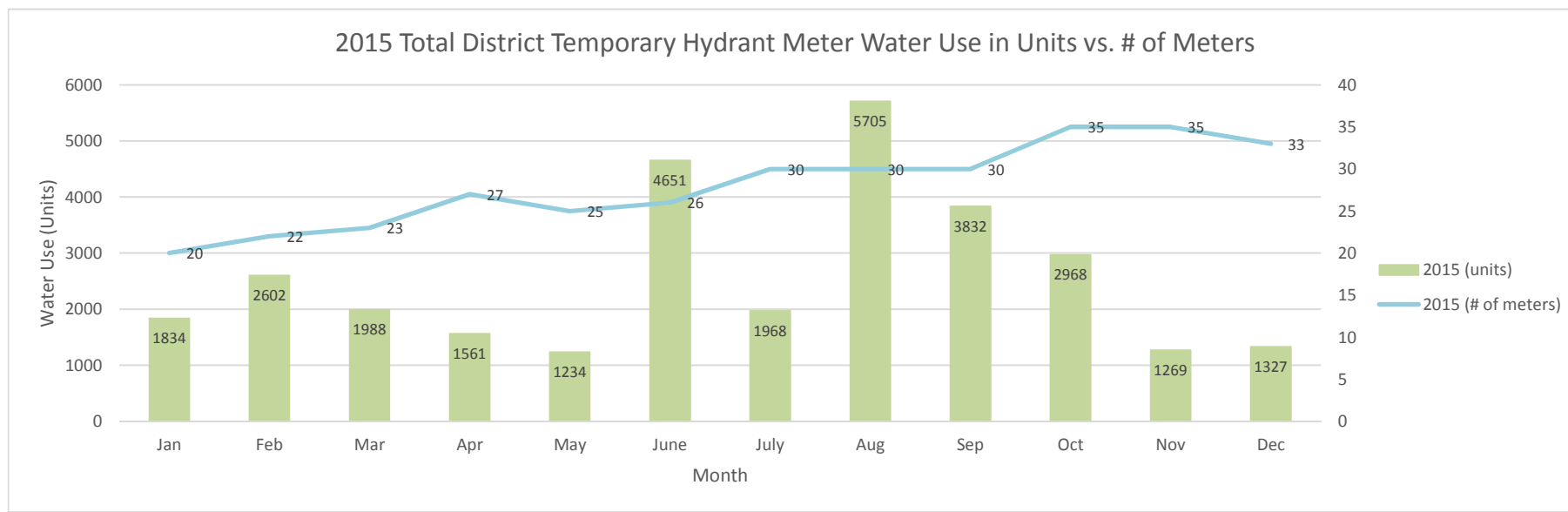
## Temporary Hydrant Meters Water Use (Units)

| Marina             |     |     |     |     |     |      |      |     |     |     |     |     |
|--------------------|-----|-----|-----|-----|-----|------|------|-----|-----|-----|-----|-----|
|                    | Jan | Feb | Mar | Apr | May | June | July | Aug | Sep | Oct | Nov | Dec |
| 2014 (units)       | 2   | 0   | 1   | 0   | 14  | 0    | 0    | 0   | 5   | 3   | 1   | 0   |
| 2015 (units)       | 936 | 0   | 0   | 0   | 0   | 17   | 0    | 0   | 0   | 0   | 0   | 0   |
| 2015 (# of meters) | 0   | 0   | 0   | 0   | 0   | 1    | 0    | 0   | 0   | 0   | 0   | 0   |

| Ord                |      |      |      |      |      |      |      |      |      |      |      |      |
|--------------------|------|------|------|------|------|------|------|------|------|------|------|------|
|                    | Jan  | Feb  | Mar  | Apr  | May  | June | July | Aug  | Sep  | Oct  | Nov  | Dec  |
| 2014 (units)       | 1075 | 1124 | 2316 | 1655 | 2563 | 3142 | 4421 | 2732 | 1767 | 3207 | 960  | 362  |
| 2015 (units)       | 898  | 2602 | 1988 | 1561 | 1234 | 4634 | 1968 | 5705 | 3832 | 2968 | 1269 | 1327 |
| 2015 (# of meters) | 20   | 22   | 23   | 27   | 25   | 25   | 30   | 30   | 30   | 35   | 35   | 33   |

### TOTAL

|                           | Jan  | Feb  | Mar  | Apr  | May  | June | July | Aug  | Sep  | Oct  | Nov  | Dec  |
|---------------------------|------|------|------|------|------|------|------|------|------|------|------|------|
| <b>2014 (units)</b>       | 1077 | 1124 | 2317 | 1655 | 2577 | 3142 | 4421 | 2732 | 1772 | 3210 | 961  | 362  |
| <b>2015 (units)</b>       | 1834 | 2602 | 1988 | 1561 | 1234 | 4651 | 1968 | 5705 | 3832 | 2968 | 1269 | 1327 |
| <b>2015 (# of meters)</b> | 20   | 22   | 23   | 27   | 25   | 26   | 30   | 30   | 30   | 35   | 35   | 33   |



## 2015 - Temporary Meter Water Use: Percentage of Total Production

|                                    | 2015     |          |          |          |          |        |        |        |        |        |       |       |
|------------------------------------|----------|----------|----------|----------|----------|--------|--------|--------|--------|--------|-------|-------|
|                                    | January  | February | March    | April    | May      | June   | July   | Aug    | Sep    | Oct    | Nov   | Dec   |
| <b>Production (HCF)</b>            | 107888.1 | 105134.9 | 127273.7 | 132488.2 | 121523.3 | 118718 | 130280 | 129278 | 124734 | 118849 | 94919 | 95146 |
| <b>Temporary Hydrant Use (HCF)</b> | 1834     | 2602     | 1988     | 1561     | 1234     | 4651   | 1968   | 5705   | 3832   | 2968   | 1269  | 1327  |
| <b>Percentage</b>                  | 1.7%     | 2.5%     | 1.6%     | 1.2%     | 1.0%     | 3.9%   | 1.5%   | 4.4%   | 3.1%   | 2.5%   | 1.3%  | 1.4%  |

